

# MONTHLY MEMBERSHIP PROGRESS REPORT

LOCATION AUSTRALIA

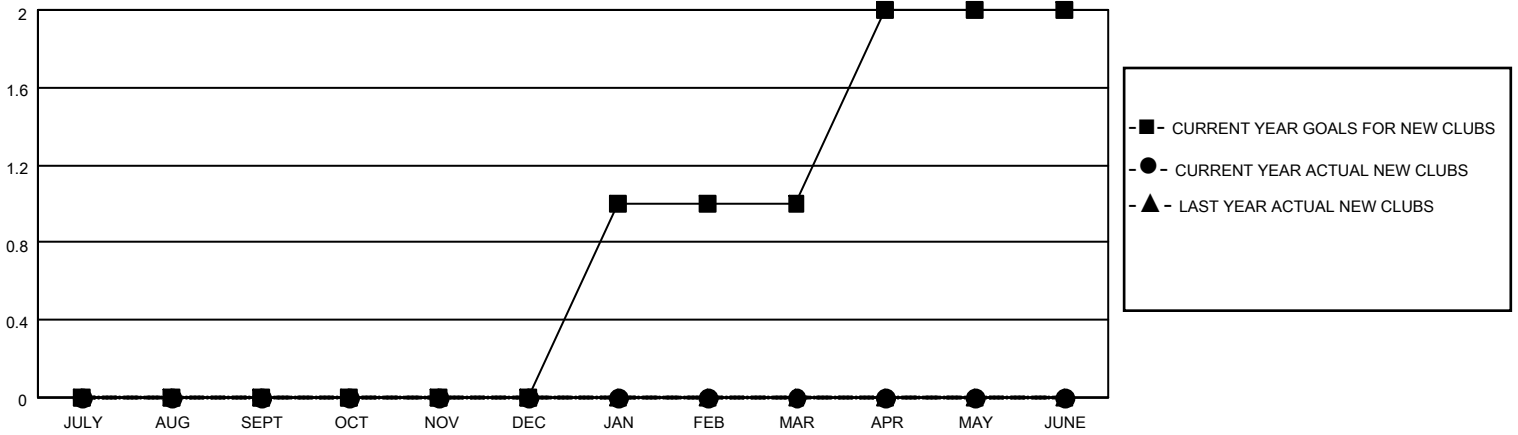
District 201Q1

Results as of: 6/30/2021

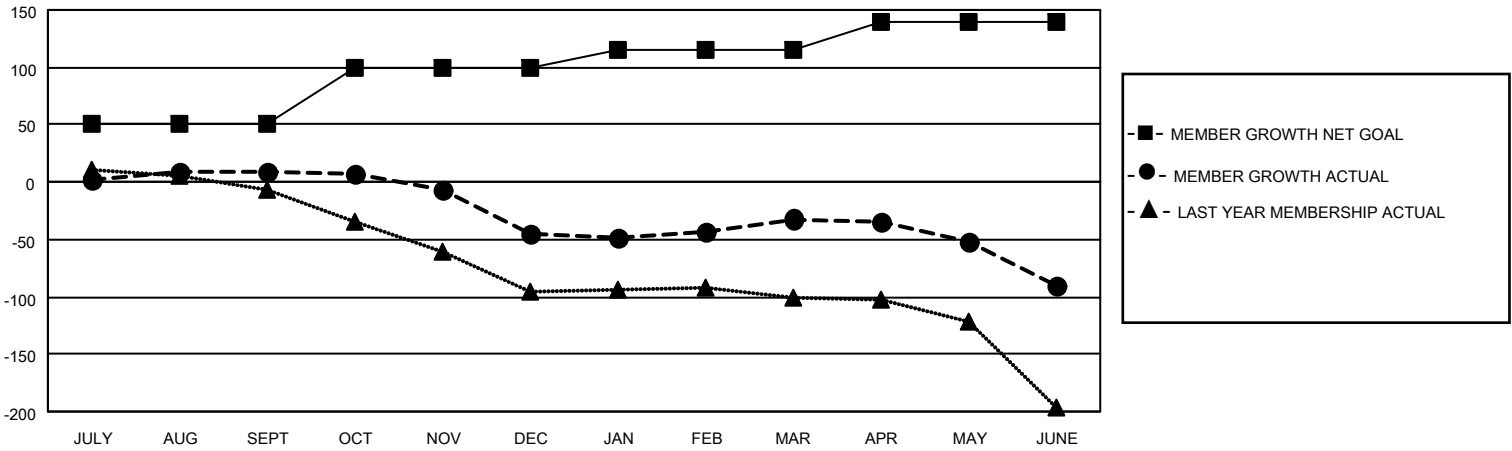
Clubs			
RESULTS FOR 2020-2021			
QUARTER	NEW CLUB GOAL	NEW CLUBS	DROPPED CLUBS
JULY/AUG/SEPT	0	0	0
OCT/NOV/DEC	0	0	0
JAN/FEB/MAR	1	0	1
APR/MAY/JUNE	1	0	1

Members			
RESULTS FOR 2020-2021			
QUARTER	MEMBER GROWTH NET GOAL	MEMBER GROWTH ACTUAL	DROPPED MEMBERS ACTUAL (including transfers)
JULY/AUG/SEPT	50	65	43
OCT/NOV/DEC	50	34	77
JAN/FEB/MAR	15	43	29
APR/MAY/JUNE	25	61	109

**GOALS AND ACTUAL NEW CLUBS CUMULATIVE**



**GOALS AND ACTUAL MEMBERS CUMULATIVE**



**DROPPED CLUBS: 2**

**46 CLUBS OF 77 ADDED 1 OR MORE NEW MEMBERS**

**GENDER DISTRIBUTION**

MALE 914 (60.57%)  
FEMALE 595 (39.43%)

**DROPPED MEMBERS**

DECEASED	24
CLUB CANCELLED	0
OTHER	234
<b>TOTAL</b>	<b>258</b>

[CLICK HERE FOR CUMULATIVE MEMBERSHIP DATA](#)

TOTAL FAMILY UNIT MEMBERS	271
FAMILY MEMBERS PAYING HALF DUES	137